

# 2026 SRDP Program

## Bulletin #1

March 5, 2026

### Employment Opportunity Self Scoring Instructions

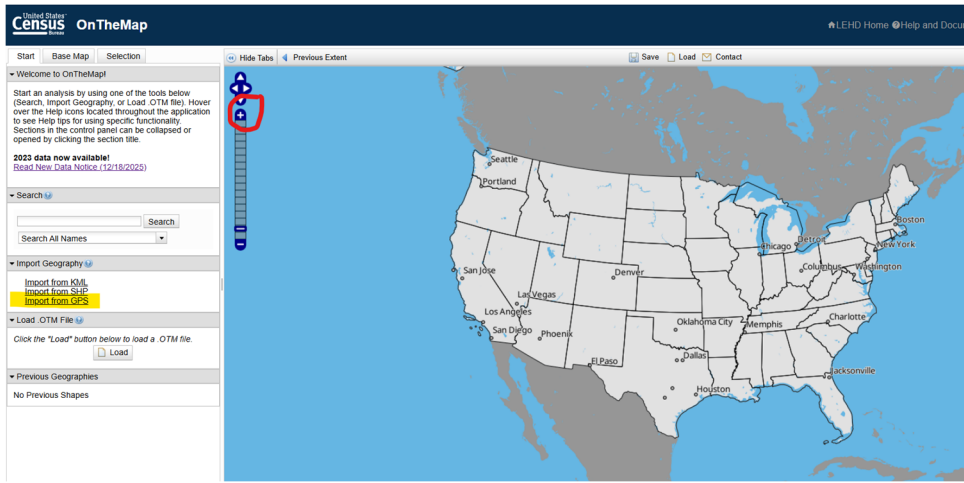
**Reminder:** SC Housing will be performing its own scoring review on all scoring items.

Go to <https://onthemap.ces.census.gov>

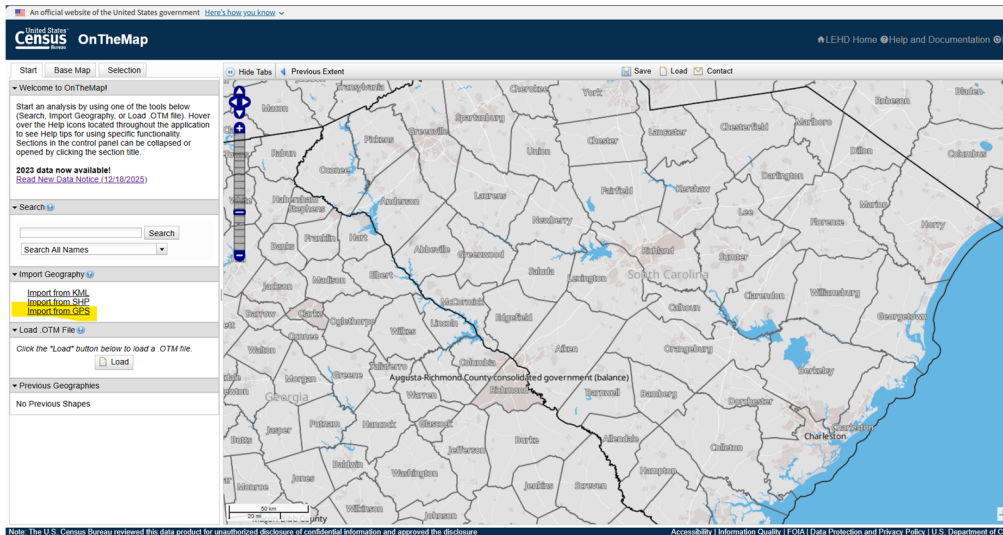
The above link should default to the *Start* tab in upper left

1. Click on the **Zoom +** sign about four times (**NOTE: you will have to move the map so that SC shows almost each time you click the + sign**).

**Before zooming in screenshot is below:**



**After zooming in screenshot is below:**

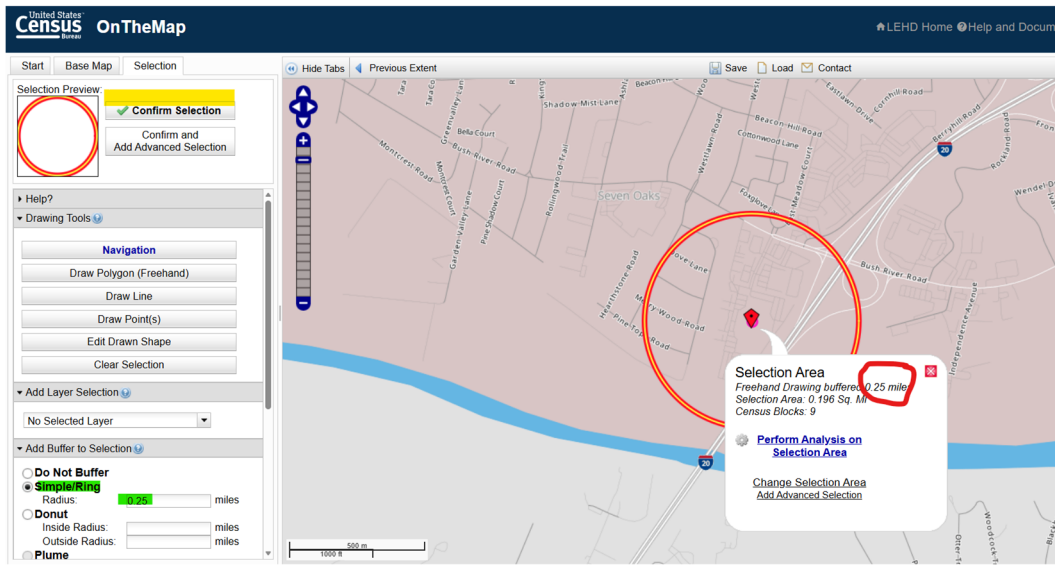


2. Click **Import from GPS** (yellow highlight) under the Import Geography section, and **enter the Longitude and Latitude** of the proposed property address from app and then click **Import**.

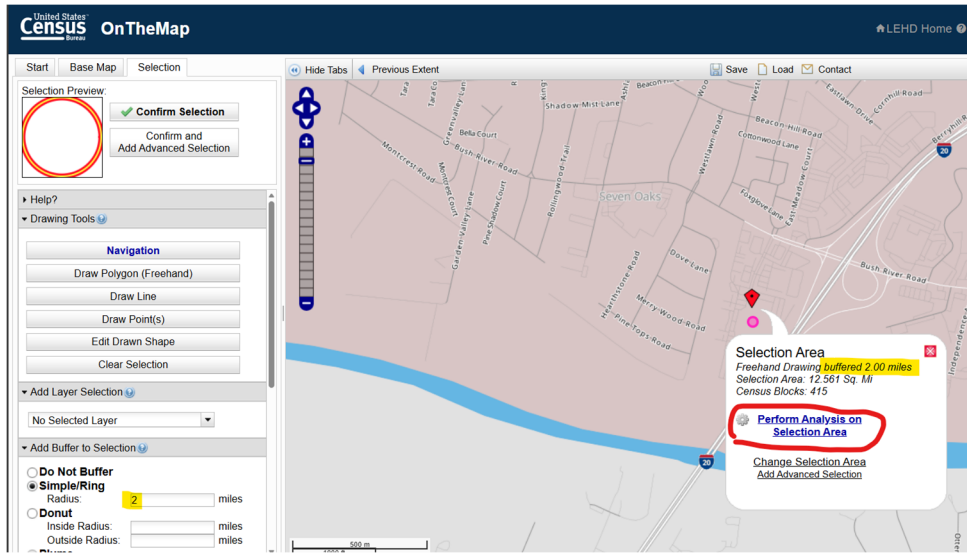
Using SC Housing as an example, 300 Outlet Pointe Blvd, Columbia, SC 29210:

– **Longitude: -81.12561** (←must be a negative) **Latitude: 34.03009**

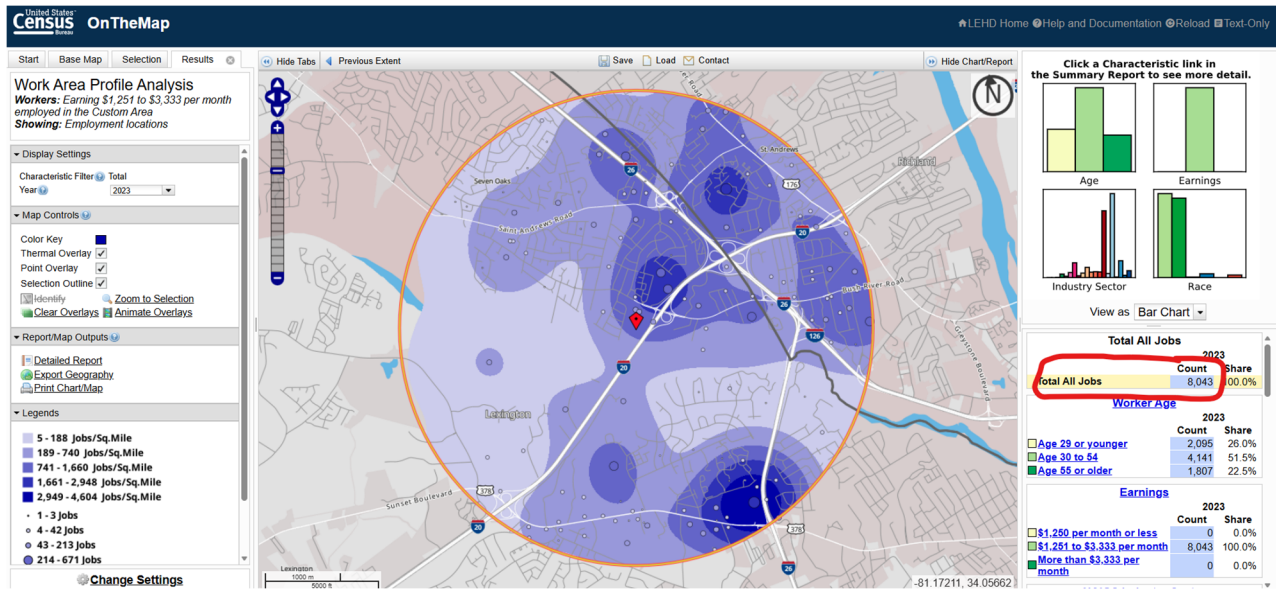
This will bring you to the Selection tab and give you a default radius of .25 mi with options shown in the screen shot below.



3. **Change the Radius in the lower left (green highlight), under “Add Buffer to Selection” to the radius (2 or 4 miles) per page 32 of the 2026 SRDP Application Manual (“the Manual”) under the “Simple Ring” choice.**
4. **Click “Confirm Selection”** (yellow highlight in upper left). You will now see that the Selection Area has changed to buffer 2 miles or 4 miles depending on your project location. (Page 32 of the 2026 SRDP Application Manual):



5. Click **Perform Analysis on Selection Area** – circled in red above
  
6. An **“Analysis Settings”** window will pop up
  - a. Under **Home/Work Area** – Choose **“Work”**
  - b. Under the Analysis Type, choose **Area Profile** and for the **Labor Market Segment** dropdown, choose **“\$1,251 to \$3,333 per month”**
  - c. Click on **2023** for Year (the most recent data)
  - d. Click **“All Jobs”** for Job Type
  - e. Click **GO**
  
7. If needed for documentation purposes, **the map will be too large to show the radius**. Decrease the size of the map by clicking the **minus sign** 3 or 4 times. Be sure the entire radius circle is showing, similar to the screenshot below.



- The number of jobs under *Total All Jobs* on the right of the screen (circled in red) is 8,043 jobs which, in this example, is worth 10 points per page 32 in the Manual.

Please email [CommunityDevelopmentPrograms@schousing.com](mailto:CommunityDevelopmentPrograms@schousing.com) if you have any questions